

CONCESSIONARIO:



MINERARIA di BOCA

società a partecipazione

REGIONE PIEMONTE
PROVINCIA DI VERCELLI
COMUNE DI LOZZOLO

Concessione Mineraria: "CROSO DEL SASSO"

RINNOVO CONCESSIONE MINERARIA
r.d. 1443/1927 - D.Lds 42/2004 - L.R. 45/89

Data: Gennaio 2026

Tav.
1

PLANIMETRIA STATO ATTUALE

Scala:
1:1.000

 RICCARDO
CAO
13.01.2026
17:00:22
GMT+00:00

Firmato digitalmente da:

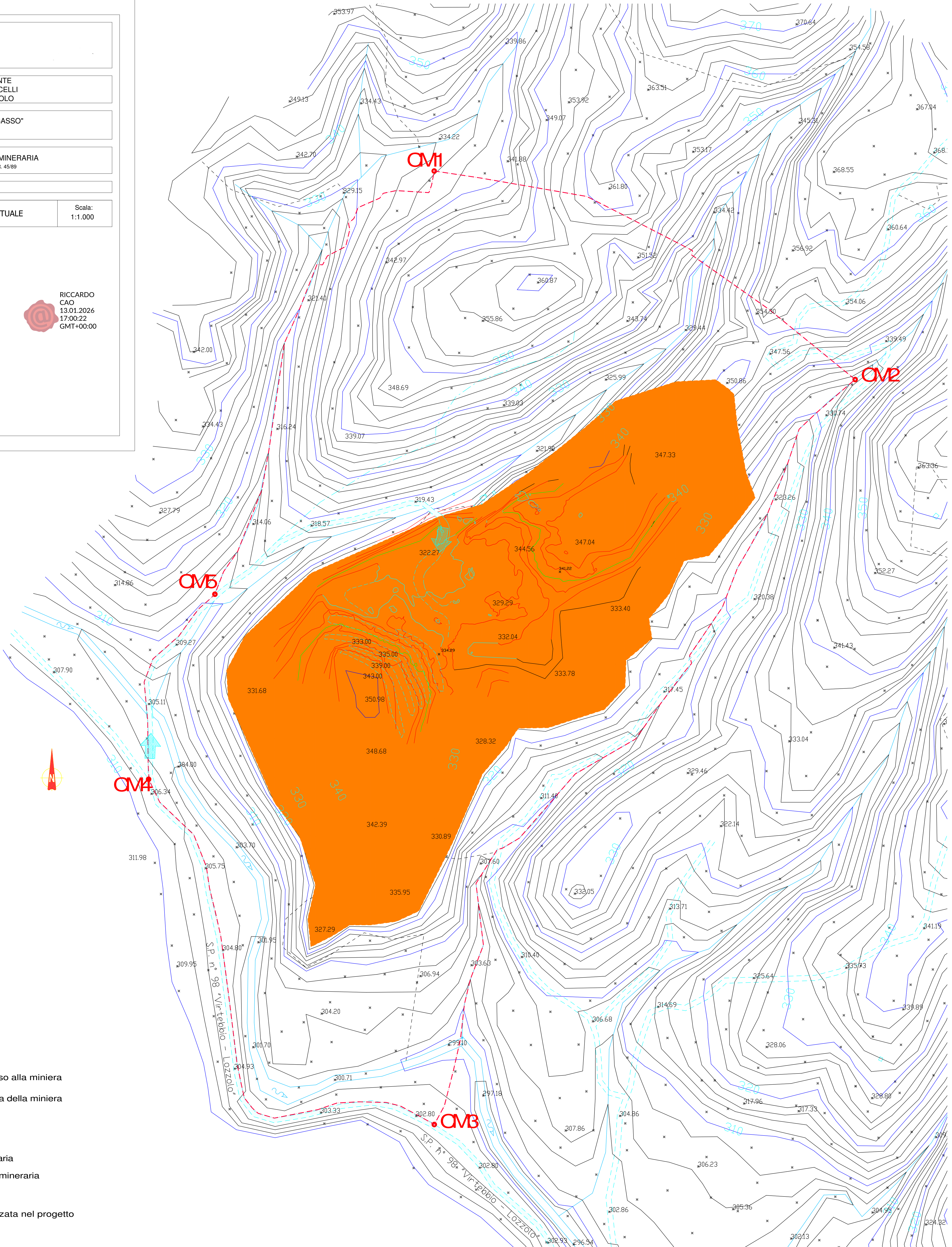
CUROCCHI ANGELO

Firmato il 13/01/2026 18:27










Seriale Certificato: 2380101

Valido dal 20/04/2023 al 20/04/2026

InfoCamere Qualified Electronic Signature CA



LEGENDA

-  Strada esistente di accesso alla miniera
-  Accesso principale all'area della miniera
-  Sentieri
-  Piste esistenti
-  Ricovero attrezzi
-  Limite concessione mineraria
-  Vertici della concessione mineraria
-  Corsi d'acqua ed impluvi
-  Area di intervento autorizzata nel progetto